

AMENDMENT
TO
DECLARATION OF CONDOMINIUM
OF
CRYSTAL SPRINGS CONDOMINIUM

VERIFIED BY:

83 DEC 1 AM 9 47

FILED & RECORDED
CITRUS COUNTY, FLORIDA
WALT CONNORS, CLERK

364658

This is to certify that a special meeting of Crystal Springs Condominium Association, Inc., held November 17, 1983, with 100% of the membership present, resolution was unanimously approved pursuant to Florida Statutes 718.104 authorizing inclusion of Surveyor's Certificate for Building 3 of Crystal Springs Condominium as amendment to the Declaration of Condominium filed for record on November 14, 1983, in Official Records Book 628, pages 1988 through 2039, public records of Citrus County, Florida.

THEREFORE, pursuant to Florida Statutes 718.104, the attached Surveyor's Certification as to Building 3 which comprises Units 3A and 3B shall be included in the aforementioned Declaration of Condominium.

This Amendment to Declaration with attachment hereto made and entered into the 17th day of November, 1983.

ATTEST: Dolores Witt
DOLORES WITT, Secretary

CRYSTAL SPRINGS CONDOMINIUM
ASSOCIATION, INC.

Margaret J. Walker
Witness

BY: Richard Witt
RICHARD WITT, President
(seal)

Anita Painter
Witness

STATE OF FLORIDA:
COUNTY OF CITRUS:

I HEREBY CERTIFY that on this day, before me, an officer duly authorized in the State and County aforesaid to take acknowledgments personally appeared RICHARD WITT and DOLORES WITT, well known to me to be the President and Secretary respectively of the corporation named in foregoing document and they severally acknowledged executing the same in the presence of two subscribing witnesses freely and voluntarily under authority duly vested in them by said corporation and that the seal affixed thereto is the true corporate seal of said corporation.

WITNESS my hand and official seal in the County and State last aforesaid this 17th day of November, 1983.



Anita Painter
Notary Public
State of Florida
My Commission Expires: 10-5-87

BOOK 629 PAGE 2070

Return To Crystal River Title Co. Inc.
File # 83-14147

THIS INSTRUMENT PREPARED BY:
Margaret T. Walker
ATTORNEY AT LAW
P.O. Box 1030
Crystal River, Fla. 32629

SURVEYOR'S CERTIFICATION
CRYSTAL SPRINGS, A CONDOMINIUM

I have examined the Declaration of Condominium of Crystal Springs, A Condominium, and have accomplished on-site inspection and certify that the construction of the improvements described for Building three is substantially complete and, together with the provisions of the Declaration describing the Condominium Property, and the Exhibit "A" attached hereto is an accurate representation of the location and dimensions of said improvement, and that the identification, location, and dimensions of the common elements and of each unit can be determined from these materials and the utility service, and access to the units, and common element facilities serving the building described above are substantially complete.

DONE this 17 day of November, 1983.

BY: 

Registered Land Surveyor No. 3597



BOOK 629 PAGE 2071

2071

REDDIE HAYMOND



NOTE: L.C.E. = LIMITED COMMON ELEMENT.
NOTE: SHADED AREAS DENOTE CONCRETE SLABS

CRYSTAL SPRINGS, A CONDOMINIUM

HENIGAR & RAY ENGINEERING ASSOCIATES, INC.
CONSULTING ENGINEERS • LAND SURVEYORS • LAND PLANNERS
640 EAST HWY. 44, CRYSTAL RIVER, FLORIDA 32629
TELEPHONE: (904) 795-6551

DATE : 5/11/83

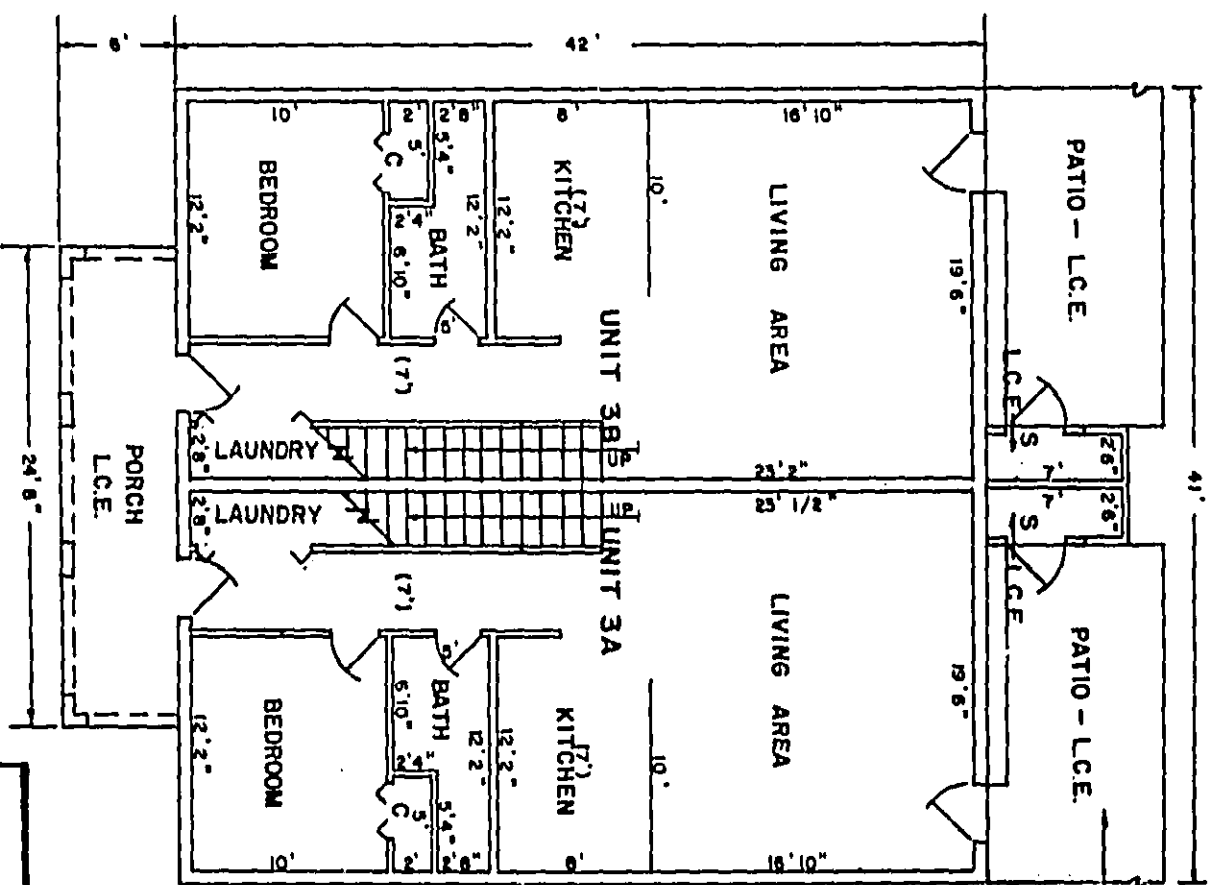
FF - 12

FEB 26 7 18

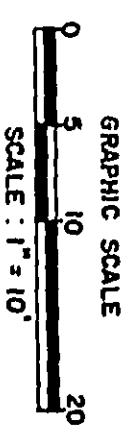
CRYSTAL SPRINGS, A CONDOMINIUM

EXHIBIT "A"
SHEET 2 OF 3 SHEETS

SEE SHEET NO. 3 FOR PATIO DIMENSIONS



C = CLOSET
S = STORAGE
L.C.E. = LIMITED COMMON ELEMENT



REVISED: 11/16/83

TYPICAL FIRST FLOOR PLAN
BUILDING NO. 3

HENIGAR & RAY ENGINEERING ASSOCIATES, INC.
CONSULTING ENGINEERS - LAND SURVEYORS - LAND PLANNERS
640 EAST HWY. 44, CRYSTAL RIVER, FLORIDA 32629
TELEPHONE: (904) 795-6551

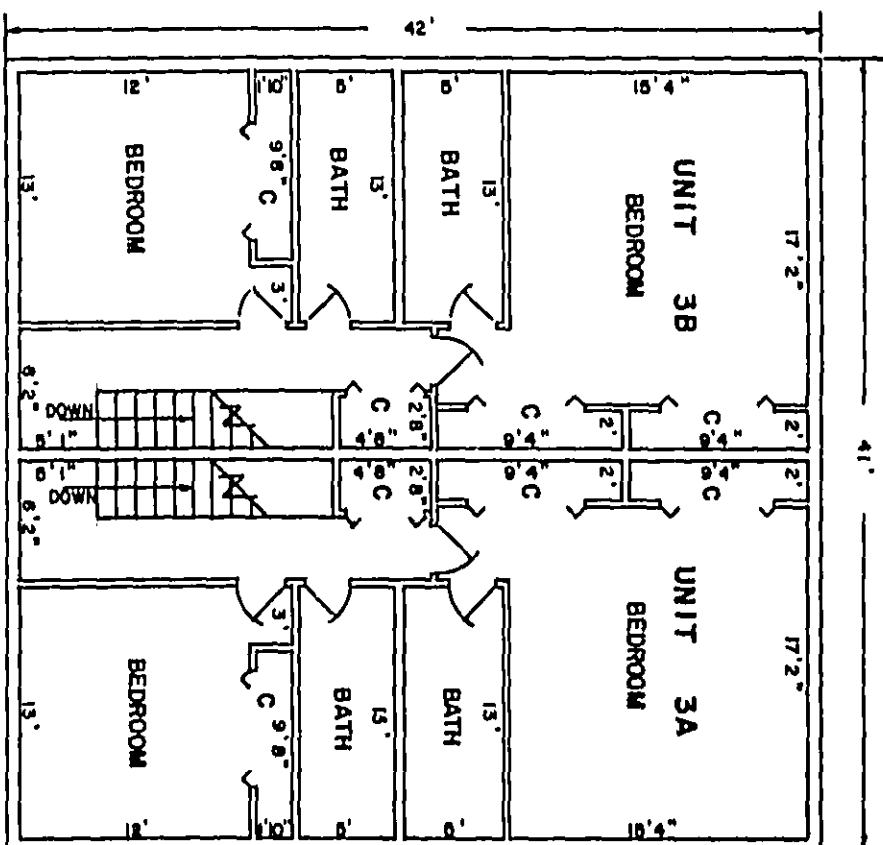
DATE: 5/11/83 FF-12

CRYSTAL SPRINGS, A CONDOMINIUM

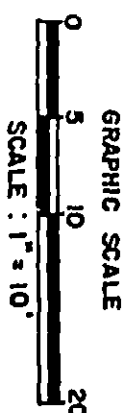
EXHIBIT "A"
SHEET 2 OF 2 SHEETS

BOOK 629 PAGE 2074

FLOOR ELEV. UNIT 3A : 18.59
CEILING HEIGHT UNIT 3A : 7'10 1/2"
FLOOR ELEV. UNIT 3B : 18.58
CEILING HEIGHT UNIT 3B : 7'10 1/2"



C = CLOSET



TYPICAL SECOND FLOOR PLAN
BUILDING NO. 3

REVISED : 11/16/83

HENIGAR & RAY ENGINEERING ASSOCIATES, INC.
CONSULTING ENGINEERS - LAND SURVEYORS - LAND PLANNERS
640 EAST HWY. 44, CRYSTAL RIVER, FLORIDA 32629
TELEPHONE: (904) 795-6551

DATE: 5/11/83 FF-12